



# SOLUTION NOTE

## FLANDRIA TRANSFORMER SUBSTATION COOPERATIVA ELÉCTRICA LUJÁN (ARGENTINA)

SN-VILLA FLANDRIA-EN-0114

### VILLA FLANDRIA 2x10MVA 33 / 13,2 kV TRANSFORMER SUBSTATION

Luján region, with a population of 100,000 habitants, is located in the province of Buenos Aires, 60 kms far away from the Argentinian capital. The renovation and reconsideration of the transformer substation located in the city of Villa Flandria permits to meet the needs that have led to the strong growth of the region in recent years. Doubling the power capacity, increasing the number of incomings and outgoings, and providing them with the most modern technologies of switching, protection and control ensure the uninterrupted supply of cities against any unexpected situation.

**YEAR** » 2013  
**CLIENT** » Cooperativa Eléctrica de Luján  
**LOCATION** » Luján, Argentina  
**SOLUTION** » 33 / 13,2 kV Transformer Substation  
**SEGMENT** » UTI – Transmission & Distribution (T&D)



#### ORMAZABAL CGM.3: GAS INSULATED SWITCHGEAR UP TO 36 kV

**Switchgear Type:**  
CGM.3-V  
CGM.3-S  
CGM.3-P

**Electric Data:**  
36 kV – 630 A – 20 kA

**Scope of Supply:**  
8 Cubicles

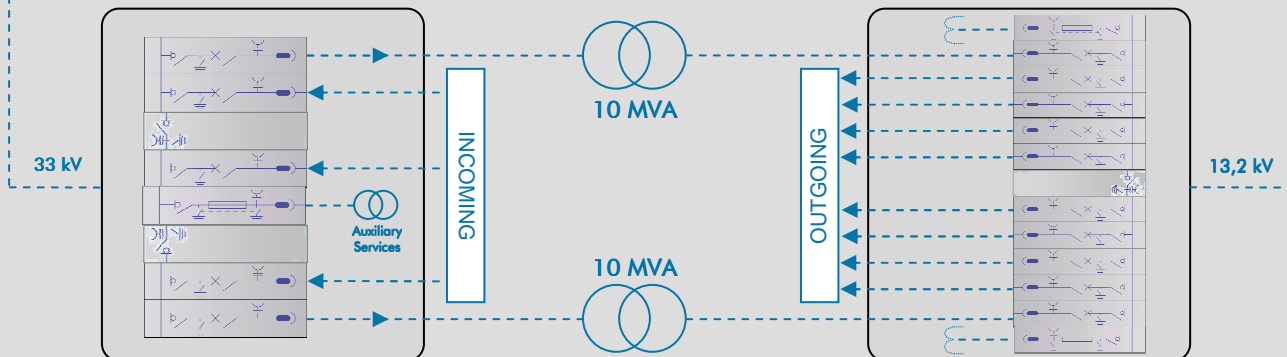


#### ORMAZABAL CGMCOSMOS: GAS INSULATED SWITCHGEAR UP TO 24 kV

**Switchgear Type:**  
CGMCOSMOS-V  
CGMCOSMOS-S  
CGMCOSMOS-P

**Electric Data:**  
24 kV – 630 A – 20 kA

**Scope of Supply:**  
13 Cubicles



#### ORMAZABAL Distribution Network Solutions (DNS):

- Protection & Control Engineering IEC 61850
- Substation Civil Work (Transformer and Switchgear Room)
- Power system connectors and terminals

#### THE CHALLENGE AND SOLUTION

The challenge of Cooperativa Eléctrica de Luján engineers was to meet growing energy demand that had been generated in recent years in its supply area.

With an old-fashioned installation of air insulated switchgear and obsolete power capacity according to past demand, the difficulties to supply current demands were notorious, so the progress towards a technology with greater guarantees was the best of solutions.

Thanks to the use of Gas Insulated Switchgear (GIS), insensitive to harsh

environmental conditions, extensible on number of incomings and outgoings, and its maneuverability, protection and remote control options, warranty service was assured.

Our experience and added value in the development of turnkey substations and comprehensive management of the entire facility including substation civil work and the connections of all equipment, helped to Cooperativa Eléctrica de Luján and his staff in the achievement of the project.

#### ORMAZABAL KEY BENEFITS

- Turnkey transformer substation.
- Contracting of a unique project manager.
- Complete retrofitting with full insulation.
- Monitoring, protection and control of the entire facility.
- Duplication of power capacity.
- Improvement of number of incomings and outgoings extensible to the future.